



Smart
Phone



ISO 9001 / ISO 14001

W&N WIN&WIN

WIN&WIN CO., LTD
www.win-archery.com

Korea(head office) : 19 Donghanggongdan-gil,
Yangseong-myeon, Anseong-si, Gyeonggi-do, 456-931, KOREA
TEL. +82 31 671 0894 **FAX.** +82 31 671 0895
E-mail. win@win-archery.com

China : Beihai Export processing zone, Beihai Av. West
Beihai city, Guangxi, 536000, CHINA

Find us on Facebook : Win&Win Archery
Follow us on Pinterest : wwarchery
Follow us on Instagram : winarchery



WHAT
CHAMPIONS ARE
MADE OF...

WIN&WIN: ESSENTIAL FOR VICTORY!



WIN&WIN has the passion and experience that has maintained KOREA's archery dominance since the 1980s. Our staff aim for excellence with each WIN&WIN product they create. We manufacture for a world of champions, where every archer in every nation strives for perfection. A world of professionalism and power, born to win. WIN&WIN products are proven at World Championships and Olympic Games, and are continually setting new world records. But we are not satisfied. In fact, we are only just getting started...



CONTENTS

04	WIN&WIN TECHNOLOGY
08	WIAWIS SERIES
10	• WIAWIS NANO MAX RISER
12	• WIAWIS ONE LIMB
14	• WIAWIS ACS NANO STABILIZER
16	INNO SERIES / W&W BOW
18	• INNO CXT RISER
19	• INNO AXT RISER
19	• INNO AL1 RISER
20	• INNO EX LIMBS
21	• RCX-100 / WINEX BOWS
22	• WINACT-VT/ RAPIDO BOWS
23	W&W ACCESSORIES
32	W&W BOW SPECIFICATIONS
33	APPAREL COLLECTION

CARBON TECHNOLOGY

DEVELOPING FUNCTIONAL ADVANCED COMPOSITE TECHNOLOGY

Athletes have high expectations of WIN&WIN. We only want to raise them. That is why we engineer innovation and optimise manufacturing processes. We combine the best quality modern carbon materials with high-tech tooling and efficient molding methods. From research and design to material testing, development and production, we improve the quality of our bows with each range we create. Our expert staff will continue to develop new and exciting techniques that keep WIN&WIN bows winning medals around the world. You can expect excellence from WIN&WIN.

PRODUCTION ENGINEERING

Experienced and passionate professionals with a scientific approach, developing specialized technology to make the world's best carbon products.

WIN&WIN CARBON TECHNOLOGY

High-tech engineering creates the best carbon material mixture for WIN&WIN bows, improving product quality and gaining athletes' confidence.



FROM OUR IDEAS TO YOUR HANDS : WE HARNESS EVERYTHING!

1. Customer input
2. Feasibility study
3. Analysis of structural test
4. R&D of specific new materials, processes and technologies ad hoc
5. Development of CAD and Cam files for mould fabrication and prototyping
6. Production of moulds and Pre-production prototypes
7. Production
8. Assembly operations (if necessary)
9. Finishing
10. Quality inspection
11. Delivery of finished goods





NANO TECHNOLOGY

NANO TECHNOLOGY :
ONLY FROM WIN&WIN

The new WIAWIS Bows from WIN&WIN are the most stable, accurate and durable. WIAWIS ONE Limbs are first infused with molecularly-bonded carbon nanotubes, the strongest modern material known to exist. Carbon nanotube resin has superior mechanical properties that produce consistent, accurate and secure limbs that effectively reduce shock. They are highly-well made, resistant to twisting and damage, and feel extremely smooth to shoot. Developed by WIN&WIN's manufacturing experts, the advanced nanotechnology in the new WIAWIS BOW is the future of archery consistency and accuracy. It is the science of shooting feeling.

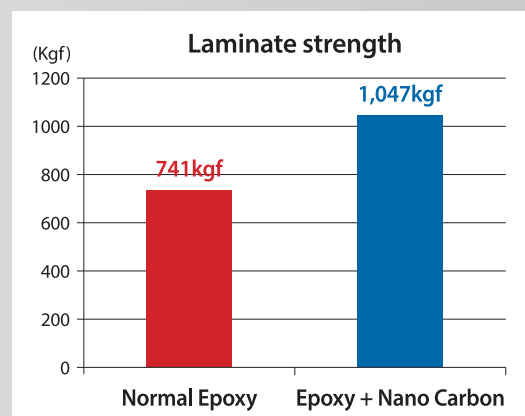
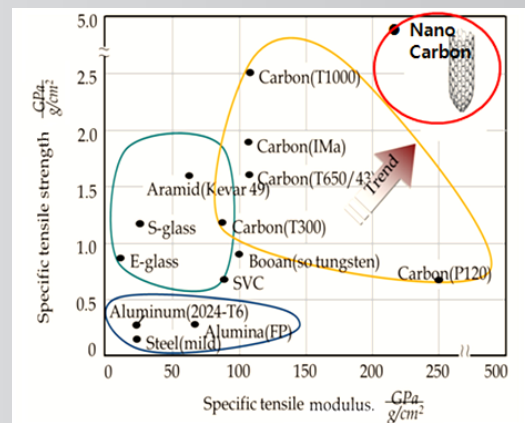
CARBON NANOTUBE TECHNOLOGY

Carbon nano-materials-carbon nanotube and graphite nanofiber are true 21st century materials. They can be made as small as 1/10,000th of a human hair, and have superior mechanical, chemical, physical and magnetic properties. Scientists believe nano-materials are the building blocks for the next generation of engineering.



CNT COMPARISON GRAPH

Nano carbon is superior on stiffness and when mixing with carbon fibers, its adhesive strength increases approximately 30~40% more than using only normal carbon fibers and it increases durability. When the Nano carbon is applied to the riser, shock and vibration absorption enhances 150 to 200% more than when using carbon fibers only. This function is shown over 30% reduced unnecessary movement in shooting and it creates clear shooting and better arrow grouping.



BOW TECHNOLOGY

WIN&WIN EQUIPMENT IS
CREATED BY THE BEST
AND CHECKED BY THE BEST.



WEIGHT BALANCE SYSTEM

Weight Balance System is inserted in the middle of the riser front end. It gives the movement of gravity center towards the frontside of riser and it affects more comfortable shooting feels and reduce the unnecessary movement.



THE SCIENCE OF SHOOTING FEELING

WIN&WIN products are designed with the archer in mind. Every innovative technology we use is part of the science of shooting feeling.



3Ss: SPEED, STABILITY & SMOOTHNESS

Limbs are evaluated by three measurements: arrow speed, stability and smoothness. We research, design and develop all our bows based on these key factors. That makes sure archers love each WIN&WIN product.



HIGH TECH FOAM CARBON

Traditional limbs are coated in glass fiber to protect the carbon but it reduces arrow speed because it is so heavy. WIN&WIN uses a 45-degree carbon system that effectively protects, increases shooting stability and reinforces the limb against twisting.



STRAIN BALANCE SYSTEM

A strain energy concentrated on the top of the limbs distributes strain energy to the overall limb. It helps unnecessary limb movement to minimize and shooting more smooth and stable.



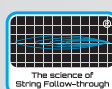
WIN&WIN BOW TECHNOLOGY

Archery specialists and composite material professionals work together at our high-tech facilities to develop each WIN&WIN product. With the right balance of expertise and passion, they deliver the science of archery every single day.



ABSORB VIBRATION SYSTEM

WIN&WIN's revolutionary new stabilization system specifically addresses the issue of vibration travelling back into the bow. The new HMC PLUS stabiliser's unique design absorbs shock, improves dampening and controls torque during shooting.



THE SCIENCE OF STRING FOLLOW-THROUGH

WIN&WIN engineers know that bow performance is measured on accuracy, stability, arrow speed and how smooth it feels at the moment it is shot. The last is the most important, and the string follow-through or string reaction on release is a major indicator of whether a bow feels good.



CROSS CARBON LIMB TECHNOLOGY

A carbon fabric exclusively produced by WIN&WIN reinforces limbs against twisting and raises their elastic modulus. That means the limbs are stiffer, more stable and produce higher arrow speeds.



TORQUE FREE

Torque as the bow twists in an archer's grip when they release affects arrow flight directly, and will lessen accuracy. Reducing torque within the 0.03 seconds after an arrow is released dramatically improves consistency. WIN&WIN's TFS device absorbs shock and vibration on shooting, minimizes torque and increases accuracy.



CENTER SHOT ADJUSTMENT SYSTEM

With WIN&WIN's unique system, limb and riser alignment can be adjusted without unstringing the bow. We also designed a highly-specialized washer that prevents limb bolts from randomly coming loose.



TOWER EFFECT

WIN&WIN's barrelled bottom (thicker and wider) design creates an innovative tower effect. This absorbs shock during the shot and increases accuracy by removing unnecessary movement in the bow.



ALUMINIUM FORGING TECHNOLOGY

Our hot forging system enhances the useful properties of all WIN&WIN aluminum products, like tensile strength and hardness.



EXTREME DURABILITY

WIN&WIN bows are made to a superior standard. During development each design must survive a 100,000-repetition durability test.



T6 HEAT TREATMENT

T6 heat treatment raises the tensile strength and elastic modulus of WIN&WIN aluminum risers, making them resilient to intense shock.



IDEAL GRIP

The WIN&WIN ideal grip is moulded to accept the joint of each finger, making drawing and aiming easier and minimizing torque during shooting.



Winning Action & Winning Spirit

WIAWIS SERIES

We are born to WIN. Are you?



1. **RISER**
WIAWIS NANO MAX
2. **LIMB**
WIAWIS ONE (FOAM / WOOD)
3. **STABILIZER**
WIAWIS ACS NANO

The WIAWIS series are complemented and renewed from the Inno series.

By effective control of strain energy & weight balance and combined nano carbon & natural fiber, WIAWIS series shows nearly 40% more stable motion and vibration reduction.

For more Stable, Powerful and Accurate shooting with good shot feeling!

Winning Action & Winning Spirit

WIAWIS NANO MAX



NANO CARBON TECHNOLOGY : FASTER, BETTER, STRONGER!

Nano carbon is superior on stiffness and when mixing with carbon fibers, its mechanical strength increases approximately 30~40% more than using only normal carbon fibers and it increases durability. When the Nano carbon is applied to the riser, shock and vibration absorption enhances 150 to 200% more than when using carbon fibers only. This function is shown over 30% reduced unnecessary movement in shooting and it creates clear shooting and better arrow grouping. WIAWIS NANO MAX riser maximizes carbon properties such as vibration absorption and adapted Nano techniques, and reduces unnecessary movement significantly.

LENGTH	25 inches	27 inches
MASS WEIGHT	1320g	1370g
TYPE	RH / LH	RH(Only)
MATERIAL	Carbon Graphite / Nano Carbon	
COLORS(TWO-TONE)	Black-Red, Black-Orange, Black-Neonyellow, Black-Blue, Black-Pink, White-Pink, White-Green	

OTHER VIEWS & COLORS



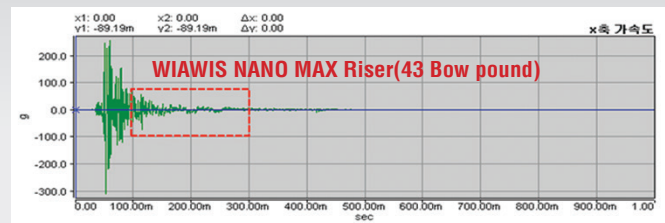
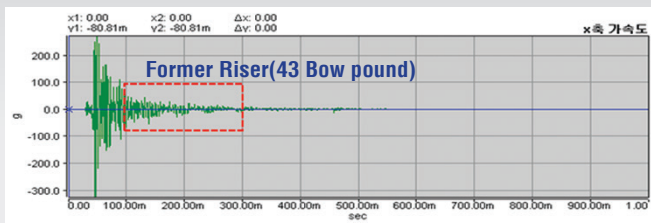
TECHNOLOGY



NEW CONCEPT CARBON RISER WITH UPGRADED FUNCTIONS AND TOP TECHNOLOGY

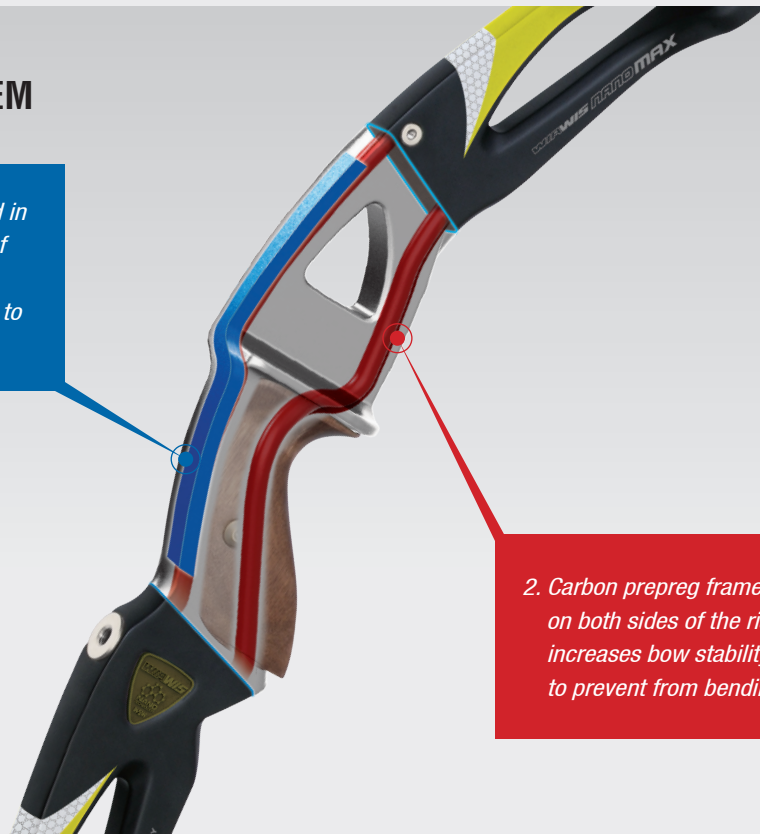
EFFECTIVE SHOOTING SHOCK ABSORPTION AND VIBRATION REDUCTION

We analyze the amount of power put through the riser when shooting and maximize the vibration damping effect and shooting stability. Balanced weight distribution of the WIAWIS NANO MAX riser has a good effect on actual shooting feeling.



WEIGHT BALANCE SYSTEM

1. Weight balance system is inserted in front of the riser grip and center of gravity is moved forward. It minimizes torque after shooting to make shooting more stable.



2. Carbon prepreg frames are molded on both sides of the riser and it increases bow stability and accuracy to prevent from bending or twisting.

MORE STABLE & ACCURATE SHOOTING

WIAWIS NANO MAX riser remarkably reduces vibration to the feel on a grip when shooting. This is possible because the center of balance is moved forward of a riser and this disperses vibrational shock efficiently, resulting in reduction of unnecessary movement.

Finally, the archer feels less vibration and shooting is considerably smoother and more stable.

WIAWIS NANO MAX carbon riser is superior to absorb vibration in material itself as well as optimizes weight balance in structural.

Winning Action & Winning Spirit

WIAWIS ONE



NANO TECHNOLOGY ONLY FROM WIN&WIN

The new WIAWIS limbs are the most stable, accurate and durable limbs. Carbon nanotube resin has superior mechanical properties that produce consistent, accurate and secure limbs that effectively reduce shock. They are highly-well made, resistant to twisting and damage, and feel extremely smooth to shoot.

FOAM CORE

Nano technology combined foam core limbs enables more powerful and smooth shooting. This characteristic increases durability, makes the limbs stable to shoot and enhances the shot feeling with fast arrow speed.

LENGTH	66", 68" & 70"
DRAW WEIGHT	28 ~ 48 lbs
TYPE	Glossy
MATERIAL	Nano Foam Core / High Modulus Carbon / Flaxpreg

WOOD CORE

The lumber that used in WIN&WIN's wood core is selected by rigorous quality specifications and sorting process for indefectible limbs. By combining of superior nano carbon that has extremely high strength and vibration reduction, WIAWIS wood core limbs features very stable feels at full draw and extremely powerful at the moment of release. It enables more constant and powerful shooting with enhanced arrow grouping.

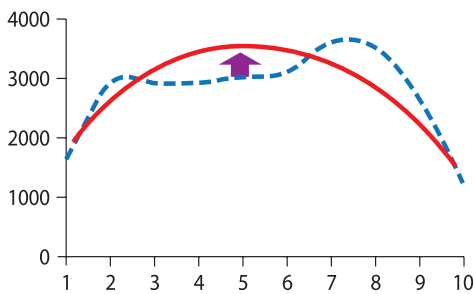
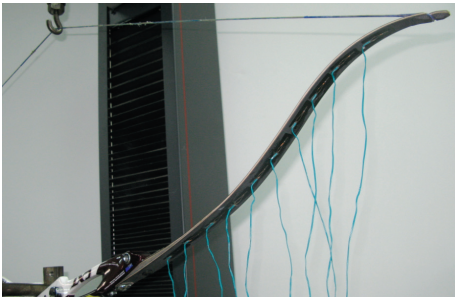
LENGTH	66", 68" & 70"
DRAW WEIGHT	28 ~ 48 lbs
TYPE	Glossy
MATERIAL	Nano Wood Core / High Modulus Carbon / Flaxpreg

TECHNOLOGY

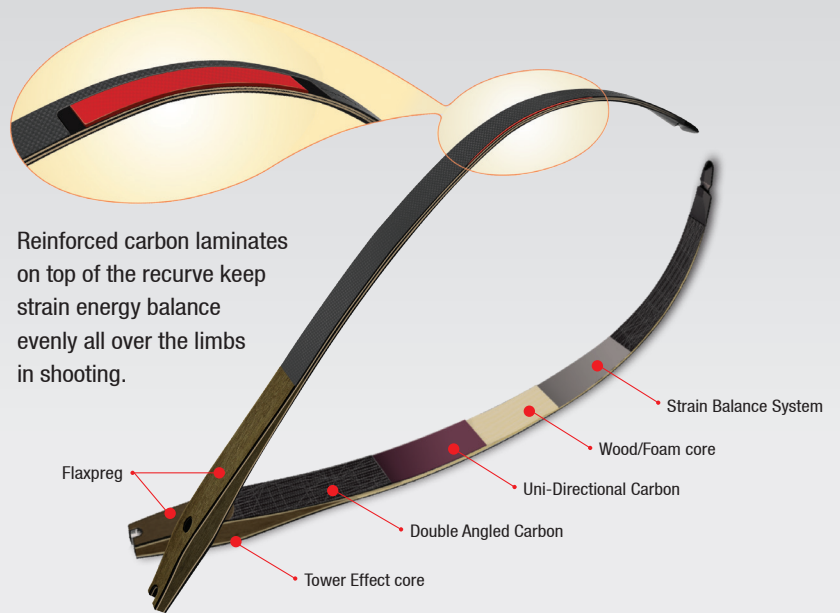


STRAIN BALANCE SYSTEM

WIN&WIN research and development team has studied on relationship between how to change arrow speed/grouping and how to affect the shooting feeling according to the changing of strain energy distribution and bending of limbs. As a result, we developed archery limbs that have ideal strain energy balance. WIAWIS ONE limbs distribute strain energy to the overall limb in the correct positions as “one”. This keeps unnecessary limb movement to a minimum and offers more stable shooting feeling. This is why the limbs are called as ‘WIAWIS ONE’.



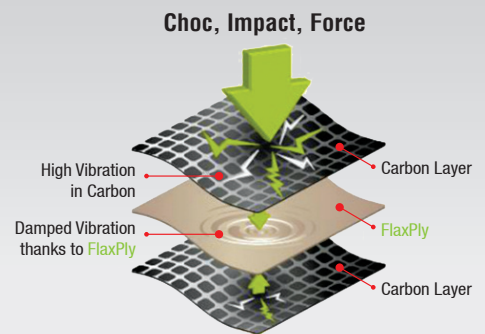
STRAIN BALANCE SYSTEM



INTERNAL DIAGRAM OF WIAWIS ONE LIMBS

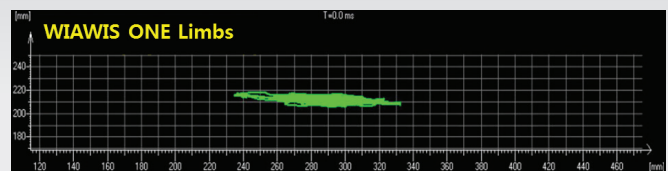
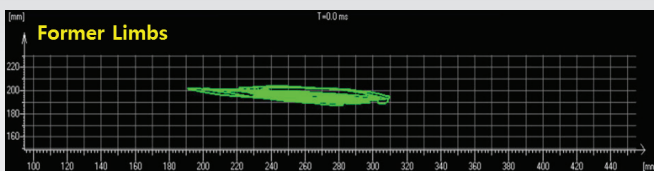
NATURAL FIBER WAS USED ON THE LIMBS FOR THE FIRST TIME IN THE WORLD

WIAWIS ONE limbs is used the material called Flaxpreg made of natural fibers and epoxy resins in archery. This material has never been used in archery manufacture before. Flaxpreg is environment-friendly material, and its twisted structure enhances the vibration damping effect in shooting. Also, Flax laminates produced with carbon fiber absorbs vibration more efficiently.



MORE ACCURATE & POWERFUL SHOOTING WITH COMFORTABLE SHOT FEELING

WIAWIS ONE limbs made of Flaxpreg minimize torque and increase shooting feeling best through the best strain energy balance. Also natural fibered limbs absorb shooting vibration much more effectively. Thus the archers can shoot much more stable and accurate.



Winning Action & Winning Spirit

WIAWIS ACS NANO



NANO CARBON FOAM STABILIZER ENHANCES STIFFNESS AND STABILITY

New WIAWIS ACS NANO stabilizer was made of reinforced high strength and anti-resistance foam. This new stabilizer enhances stiffness and stability with wider tapering than present HMC Plus stabilizer.

LONG ROD	26, 28, 30, 32 inches
SHORT ROD	10, 11, 12 inches
EXTENDER	3, 4, 5, 6 inches
COLORS	Carbon Black, Red, Blue, White



WIAWIS
ACS NANO
SHORT



ACS DAMPER



ACS WEIGHT
(Flat & Head)



WIAWIS
ACS NANO
EXTENDER



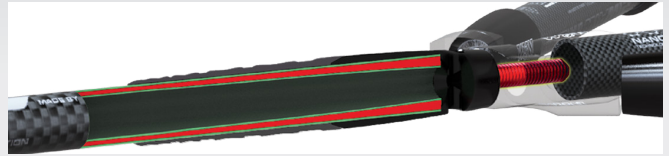
WIAWIS ACS NANO LONG

► 1 HEAD INCLUDED!

► 1 HEAD+1 FLAT INCLUDED!

MORE EFFICIENT TAPERED DESIGN TO IMPROVE STIFFNESS

WIAWIS ACS NANO NEW stabilizer was developed focused on improving shot feeling. We increased stiffness using tapered tube on end part of the stabilizer. It reduces unnecessary movement by eliminating vibration after shooting efficiently and with controlling shock and vibration transferred from limb movement.

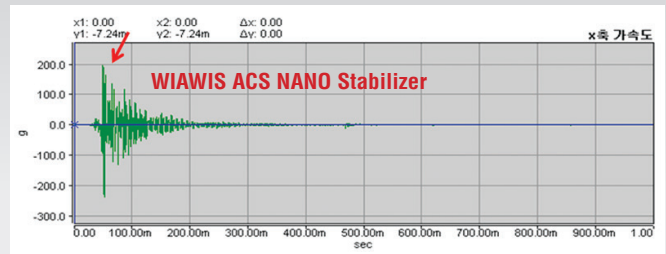
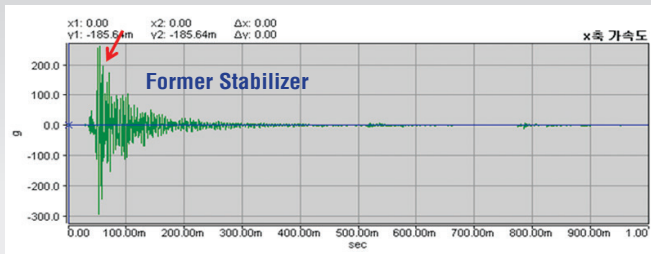


DESIGN TO RESTRAIN TORQUE EFFICIENTLY

WIAWIS ACS NANO stabilizer features eliminate the V-bar connecting bolt weighting 40 grams by integrating the bolt within the stabilizer cap. This offers a reduced weight on the back side, so 25 grams was added on the opposite end, the stabilizer head. The center of gravity has been moved forward to eliminate unnecessary movement and reduces vibration more efficiently. WIAWIS ACS NANO NEW stabilizer features not only offer better shooting feeling but also give technological advancements on current competitive stabilizers.

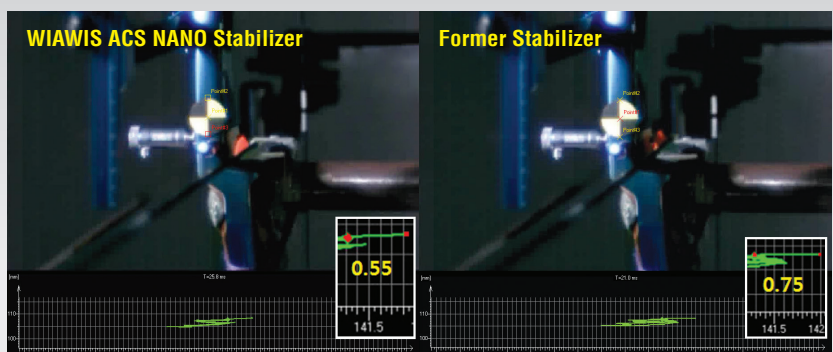


STABLE SHOOTING WITH FEELS COMFORTABLE AND EXCELLENT VIBRATION REDUCTION



MORE EFFICIENTLY CONTROLS THE RISER MOVEMENT

We can see how well WIAWIS ACS NANO stabilizer controls unnecessary movement through the arrow rest movement. Graph on the right shows arrow rest movement of the bow set up WIAWIS ACS NANO stabilizer is much smaller and moves more regularly. 2015 WIAWIS ACS NANO stabilizer used the special foam having excellent shock resistance and rigidity and it made shooting more stable with shooting feels comfortable.





INNO SERIES

We are born to WIN. Are you?



Innovation!

Inspiration! Ingenuity!

INNO BOW, MODERN WIN&WIN TRADITION

WIN&WIN's INNO BOW range features risers and limbs made from modern materials to suit a range of archers.

The series is customisable with adjustable weight control systems, and the powerful INNO limbs fit any INNO riser.

Introducing the world's best recurve bow : the INNO.

INNO RISERS

INNO CXT, INNO AXT, INNO AL1

INNO LIMBS

INNO EX POWER, INNO EX PRIME



WIN&WIN
PROFESSIONALISM

INNO CXT



UNIQUE DESIGN : OPTIMISING CARBON

Made to maximize the properties of carbon, the INNO CXT riser minimizes unnecessary limb movement when an arrow is released. This makes shooting far more stable and efficient by lessening the wasted energy lost as vibration. The INNO CXT is so pioneering it won a Red Dot Design Award. The problem of twisting and bending in carbon risers is a thing of the past. WIN&WIN engineers solved these issues with improvements to the molding process used to make the INNO CXT. It is possible to achieve practically perfect limb and riser alignment with WIN&WIN bows. Many archers with draw lengths of 27", 29" and 31" struggle to set-up a bow with a 25" riser. The INNO CXT is available in a 26" version, which makes a 67", 69" or 71" bow with short, medium or long limbs. Do not settle for anything less than the perfect fit, choose the right WIN&WIN INNO CXT for you.



(The only, 26" riser is without side weights.)

LENGTH	23 inches	25 inches	26 inches	27 inches
MASS WEIGHT	1200g	1250g	1285g	1300g
TYPE	RH	RH / LH	RH	RH
MATERIAL	Carbon Graphite / Carbon			
COLORS	TOW-TONE : BlackWhite-Gold, Dark Red-White, Dark Navy-White			
	GLOSSY : Black, Red, Blue, White MATT : Black, Titanium Gray			



INNO AXT

INNO AL1



EXTREME TECHNOLOGY

Combining the award-winning design of the INNO CXT with the trusted traditional material, aluminum, the new INNO AXT is a premier competitive riser. Forged aluminum and machined with a CNC, it significantly increases stability and accuracy in shooting. The INNO AXT has improved tensile strength by 30% over normal solid aluminum risers. The INNO AXT weighs 1340 grams and feels heavier in the hand. This new innovative riser is very stable to shoot due to the balanced weight. It is perfect for archers who prefer the confident feel of metal when they pick up their bow.

MODERN STYLE, TRADITIONAL MATERIAL

The stylish INNO AL1 is perfectly balanced for the ultimate shooting accuracy and consistency. There is no lateral twisting in this 25" riser, making it feel completely comfortable to shoot with. Forged aluminum and machined with a CNC, it significantly increases stability and accuracy in shooting. The INNO AL1 has improved tensile strength by 30% over normal solid aluminum risers. The INNO AL1 weighs 1320 grams, making it feel solid in the hand and the aluminum material it is made from inspires confidence. The INNO AL1 comes in Black, Red, Blue, and White as well as three two-tone color schemes. This is a serious riser, primed and ready for the world stage.



LENGTH	25 inches
MASS WEIGHT	1330g
TYPE	RH / LH
MATERIAL	Forged Aluminum / Cut by Machine

COLORS (Anodizing) Black, Red, Blue, Gold, Green, Pink

LENGTH	25 inches
MASS WEIGHT	1320g
TYPE	RH / LH
MATERIAL	Forged Aluminum / Cut by Machine

COLORS (Painting) TOW-TONE : Black-Gold, Red-White, Blue-White
GLOSSY : Black, Red, Blue, White



INNO EX POWER

INNO EX PRIME



FOAM CORE

The carbon outer structure of INNO EX POWER limbs is created with N-composite carbon nano technology. This is an adjustment at the molecular level that significantly strengthens and enhances the stability of the carbon matrix. Inside the limb, the nanofoam core connects the high-modulus carbon at strategic points. It provides durability, makes the limbs smooth to shoot and enhances their overall feel.

WIN&WIN is leading the way in recurve limb technology : superior speed, stability and shooting feeling make INNO EX POWER the best carbon limb available.

LENGTH	66", 68" & 70"
POUNDAGE	28 ~ 48 lbs
TYPE	Glossy / Matt
MATERIAL	Nano Foam Core / High Modulus Carbon

WOOD CORE

Utilising WIN&WIN's N-composite carbon nano technology, the structure of INNO EX PRIME limbs is significantly stronger, right down to its molecular carbon matrix.

INNO EX PRIME contains a core made of meticulously and especially-selected wood. This makes the limb feel very stable at full draw and extremely powerful at the moment of release.

Focus on your draw, aim and executing the perfect shot.

Let INNO EX PRIME concentrate on delivering a consistent, stable arrow down the range.

LENGTH	66", 68" & 70"
POUNDAGE	28 ~ 48 lbs
TYPE	Glossy / Matt
MATERIAL	Nano Wood Core / High Modulus Carbon



RCX-100

RISER

The light, high-performance RCX-100 riser is designed around two carbon frames that maximise its strength at the moment it is shot. Built from royal cross carbon and carbon U/D using WIN&WIN advanced material technologies, the RCX-100 can be aligned and centre-shot adjusted while the bow is strung.

LIMBS

RCX-100 limbs contain a CRS foam core that optimises their speed. They feature high modulus carbon and the 45-degree carbon system developed by WIN&WIN engineers to increase shooting stability and protect the limb during use, also ensuring straightness and resiliency against twisting, centre-shot adjusted while the bow is strung.



RCX-100 RISER

LENGTH	25 inches
MASS WEIGHT	1100g
TYPE	RH / LH
MATERIAL	Royal Cross Carbon & Carbon U/D
COLORS	Gold, Red, Blue, Pink, Black

* The carbon pattern on the surface can be partially shown irregularly.

RCX-100 LIMBS

LENGTH	66" ,68" & 70"
POUNDAGE	28 ~ 48 lbs
MATERIAL	Nano Foam Core / High Modulus Carbon



WINEX

RISER

The WINEX riser wins its fans as soon as they feel their hand nestle into its well-shaped grip. Made from strong forged aluminum, the 25" riser is stylishly designed and structured to prevent lateral twisting, making it stable and comfortable to shoot with. The handle weighs 1280 grams and comes painted.

LIMBS

Royal cross carbon is the secret to the WINEX's smooth performance. WIN&WIN's 45-degree carbon system protects the surface of the limb and provides stability, while the barrelled bottom design increases accuracy by reducing unnecessary movement when the bow is shot. WINEX limbs are available in draw weights from 28lbs to 48lbs, in 2lbs increments.



WINEX RISER

LENGTH	25 inches
MASS WEIGHT	1280g
TYPE	RH / LH
MATERIAL	Forged Aluminum / Cut by Machine
COLORS (Painting)	Silver-Red, Silver-Blue, Black, Red, Blue, Yellow, White

WINEX LIMBS

LENGTH	66" ,68" & 70"
POUNDAGE	28 ~ 48 lbs
MATERIAL	Royal Cross Carbon



WINACT -VT

RISER

The WINACT is back! As one of the most popular risers WIN&WIN have ever created, it was due a revival. Now with a fresh, modern design and a new name, the high-quality WINACT-VT is smoother to draw and aim than its predecessors. It is made from aluminum and weighs in at 1280 grams. Pick up a WINACT-VT and see how good this new version of an old favourite feels in your hand.

LIMBS

It is not just the WINACT riser that has had a makeover : the limbs deserved a refresh, too. As reliable as they have ever been, WINACT-VT limbs are better performing, more efficient and more accurate thanks to a neat new design. Get that powerful shooting feeling, tried and tested on the competition circuit, with the ever-popular carbon/wood core WINACT-VT limbs.



WINACT-VT RISER

LENGTH	25 inches
MASS WEIGHT	1280g
TYPE	RH / LH
MATERIAL	Forged Aluminum / Cut by Machine
COLORS (Anodizing)	Matt Black, Black, Red, Sky Blue, Green, Pink

WINACT-VT LIMBS

LENGTH	66" ,68" & 70"
POUNDAGE	26 ~ 46 lbs
MATERIAL	Royal Cross Carbon

RAPIDO

RISER

Offering all the benefits of a carbon composite riser at an affordable price, the clean -cut shape of the economical RAPIDO is contrasted by its stylish metal brackets. They provide a sturdy bed for limbs to sit in, and help dampen vibration throughout the riser. The new RAPIDO is recommended for archers looking for a lighter bow that feels smooth to shoot.

LIMBS

The RAPIDO carbon/foam limbs are specifically designed to complement the new carbon riser. Easy to draw and aim, the RAPIDO limbs are silky smooth to shoot and perfect for building competition archery confidence!



RAPIDO RISER

LENGTH	25 inches
MASS WEIGHT	1100g
TYPE	RH / LH
MATERIAL	Royal Cross Carbon & Carbon U/D, Glass Fiber
COLORS	Carbon Black, Red, Sky Blue, White, Neon Yellow, Pink

RAPIDO LIMBS

LENGTH	66" ,68" & 70"
POUNDAGE	26 ~ 46 lbs
MATERIAL	Royal Cross Carbon





ACCESSORIES

We are born to WIN. Are you?

Get Fully equipped from our Comprehensive range of archery accessories.

**GREAT
DESIGN FOR
GREAT
ARCHERS**

As well as manufacturing the finest quality recurve bows, WIN&WIN makes a huge range of refined archery accessories.

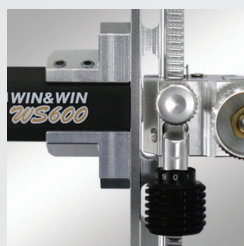
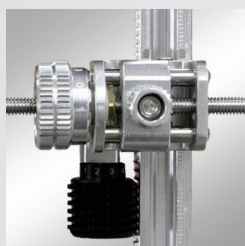
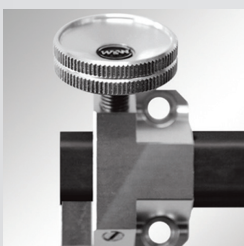
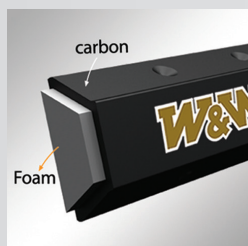
Our staff listen to athletes, understand their needs and design items that archers want.

WIN&WIN products are renowned for their high quality, functionality and reliability.

WS600 SIGHT

NEVER COMPROMISE YOUR AIM

WS600 is WIN&WIN's precision-machined competition sight, trusted by some of the world's best archers. It has wheel tuners to accurately measure fine sight movements and a slide bar for convenient and smooth vertical adjustment. A unique bolt system securely locks the sight in place. Foam inside its carbon extension bar protects the WS600 from damaging vibration that travels through a bow when it is shot. It also keeps weight to a minimum and prevents torque during shooting. Never compromise your aim. Choose the trust worthy, sturdy and secure WS600 sight from WIN&WIN.

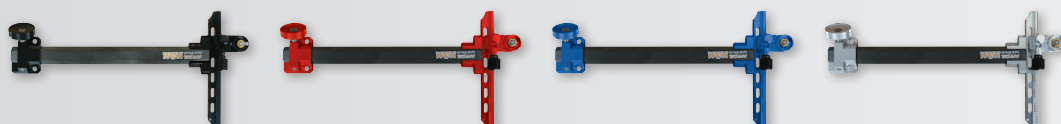


COLORS Black, Red, Blue, Silver

TYPE RH / LH

WEIGHT 585g

OTHER VIEWS & COLORS



HMC 22 STABILIZER

THE BEST STABILIZER EVER ENGINEERED

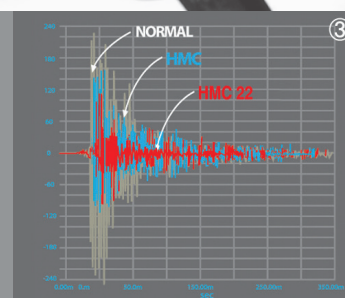
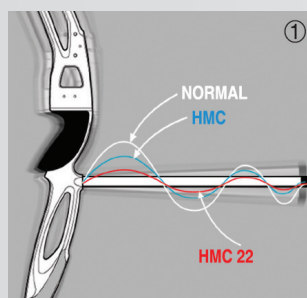
HMC 22 is WIN&WIN's revolutionary new stabilizer constructed from modern high tensile strength carbon, making it stronger and stiffer. With its highly durable 3K carbon fabric surface, the HMC 22 stabilizing system has improved dampening qualities, shock absorbance and torque control.

Unlike other stabilizers the thickness of the HMC 22 tube wall varies, helping it to absorb high levels of shock very quickly. The rod wall measures 0.0275" (0.7mm) at the front and 0.0787" (2mm) at the base. This creates reduces movement at the end of the rod and absorbing vibration throughout the length of the stabilizer rather than pushing it back into the bow.

Recurve and compound archers appreciate just how smooth this innovative design makes shooting with HMC 22. The thick, 0.866" (22mm) diameter tube is also great for compound archers looking for a sturdier stabilizer. Create your perfect stabilization system!

LONG ROD	26 inches	28 inches	30 inches	32 inches	34 inches
WEIGHT	271.5g	285.5g	299.5g	313.5g	327.5g
SHORT ROD			10 inches	11 inches	12 inches
WEIGHT			172.5g	176g	179.5g
EXTENDER		3 inches	4 inches	5 inches	6 inches
WEIGHT		77.5g	94.5g	105g	110g

- ① HMC 22 absorbs vibration at the source and heavily reduces movement, while other stabilizers release vibration along their length.
- ② The walls of other stabilizers stay the same thickness along the length of the rod (top). HMC 22 has a thicker wall at its base but gradually reduces to under half the size at the front (bottom).
- ③ A vibration wave graph shows how vibration is more effectively controlled by HMC 22 because it is absorbed progressively along the entire rod. Other stabilizers release vibration back into the riser.







HMC22 LONG

► 1 HEAD+1 FLAT INCLUDED!



HMC22 SHORT

► 1 HEAD INCLUDED!



HMC22 EXTENDER



**WEIGHT
(Flat & Head)**

www.win-archery.com
25

HMC PLUS STABILIZER

WHAT YOUR RECURVE BOW NEEDS

Recurve archers strive for higher arrow speeds, but this results in increased vibration in the bow. Up until now, stabilizers have not been able to effectively deal with this. WIN&WIN specifically designed the HMC PLUS to address this issue. The system also improves dampening, absorbs shock and helps control torque during shooting. While other stabilizers have a consistent wall thickness along their length that does not fully absorb vibration, the wall thickness of HMC PLUS varies. At the front of the rod the wall is 0.0275" (0.7mm) thick, gradually growing to 0.0787" (2mm) at the base. When installed with an extender as a full stabilization system, HMC PLUS effectively absorbs the shock produced by shooting a recurve bow.

WEIGHT
(Flat & Head)



HMC PLUS EXTENDER

LONG ROD		26 inches	28 inches	30 inches
WEIGHT		206.5g	225g	232.5g
SHORT ROD		10 inches	11 inches	12 inches
WEIGHT		141g	145g	156g
EXTENDER	3 inches	4 inches	5 inches	6 inches
WEIGHT	70g	84g	87.5g	90.5g
COLORS	Gold, Black, Red, Blue, White			

OTHER VIEWS & COLORS



HMC PLUS LONG

► 1 HEAD+1 FLAT INCLUDED!



HMC PLUS SHORT

► 1 HEAD INCLUDED!



ACCESSORIES



CX2 V-BAR

Though most shock that occurs when shooting is absorbed by a stabilizer and V-Bar, some vibration returns to the riser and makes consistent accuracy difficult. WIN&WIN's new CX2 V-Bar is designed to absorb shock more efficiently, and increase shooting consistency by minimizing the vibration that returns back into the riser. Looking for a sturdier stabilizer. Create your perfect stabilization system!

THREE STRAIGHT ANGLES	35, 40 and 45 degrees
WEIGHT	118g



CX V-BAR

The CX V-Bar is an all-carbon proven performer, far better at absorbing vibration than its aluminum competitors. It is also significantly lighter and WIN&WIN's unique 'rolling' technology greatly increases its dampening characteristics. Shooting with the CX V-Bar feels stable and smooth, something you will struggle to achieve with an aluminum v-bar.

THREE STRAIGHT ANGLES	35, 40 and 45 degrees
WEIGHT	117.5g



WEIGHT/TILLER ADJUSTMENT BOLT

TYPE	A	B (Tow-tone)	C (Tow-tone)
MATERIAL	Aluminium	Stainless steel	Stainless steel
SIZE	13mm×1.25	13mm×1.25	12mm×1.25
WEIGHT	34g	42g	39g
COLORS		Black, Red, Blue, Gold, Green, Pink, Orange	
APPLICABLE RISER	A TYPE, B TYPE : INNO AXT, INNO AL1, WINEX, WINACT-VT		C TYPE : INNO MAX, INNO CXT, RCX-100



LIMB BOLT

WEIGHT	2g (*original stainless steel limb bolt weighs 6grams)
COLORS	Black, Red, Blue, Gold, Green, Pink, Orange



WEIGHTS

WEIGHT	Head 40g	Flat 23g
COLORS	Black, Red, Blue, Gold, Green, Pink, Orange	



ACCESSORIES



ACS DAMPER

After much research and development by the Win&Win team on the shape and length of vibration waves with stabilizers, Win&Win has released their WIAWIS ACS Damper. The ACS Damper is far superior in absorbing vibration and it has been designed for use with the 2015 WIAWIS ACS stabilizer. The WIAWIS ACS Damper will also work and enhance any other stabilizer.

LENGTH	50mm
WEIGHT	40.5g
THREAD SIZE	1/4" × 20(M)



BW&BW SHORT DAMPERS

BW dampers are made from an absorbent rubber material that nearly eliminates vibration during shooting and controls poor movement in equipment after the shot.

LENGTH	BWD : 40mm	BWD SHORT : 25mm
WEIGHT	BWD : 45.5g	BWD SHORT : 32.5g
THREAD SIZE	1/4" × 20(M)	



WT DAMPERS

WIN&WIN's WT Dampers are outstanding at absorbing vibration and increasing dampening in a stabilization system. Using a special formula of TPU plastic, WT Dampers eliminate shock and greatly reduce noise.

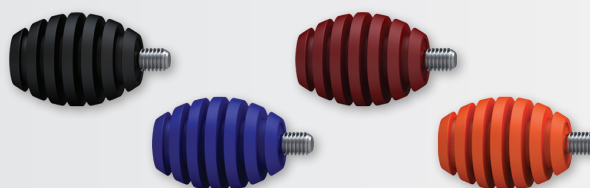
COLORS	Black, Red, Blue	
WEIGHT	WTS : 121.5g	WTW : 59g
THREAD SIZE	WTS : 5/16"-24(M)	WTW : 1/4"-20(M)



MINI DAMPER(MDW)

Mini Dampers are the most efficient small anti-vibration device, and can be installed as part of a stabilization system to help absorb shock.

COLORS	Black, Red, Blue, Orange
WEIGHT	19.5g
THREAD SIZE	1/4" × 20(M)



WK500 CUSHION PLUNGER

Well-engineered from high-quality components, the WK500 Cushion Plunger has a very smooth button action and micro click adjustments for fine bow tuning.

ADJUSTABLE LENGTH	min 17.5mm - max 24.0mm (24mm pressure point) min 24.0mm - max 29.0mm (29mm pressure point)
COLORS	Black, Red, Blue, Silver
WEIGHT	62g
THREAD SIZE	5/16"-24



ACCESSORIES



CARBON CLICKER

WIN&WIN's Carbon Clicker is light, precise and designed to fit snugly onto any riser. The matt black carbon blade gives a clear 'click' on every shot.

THREE THREAD SIZES

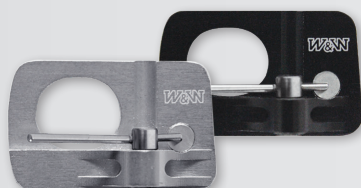
6-32, 4-40 or M4



BEARING ARROW REST

WIN&WIN's recurve arrow rest uses a flipper-style arm to improve accuracy and ensure smooth shooting. It incorporates a bearing that tightens groups on the target while providing superb clearance. The arm is stiff and stable, minimizing the vertical movement that interferes with clean arrow flight.

TYPE RH / LH
COLORS Black, Silver



360 CORDOVAN FINGER TAB

Designed with archers' comfort in mind, the new 360 Cordovan Finger Tab is a high-quality and dependable genuine leather recurve finger tab.

TYPE RH / LH
SIZE Small, Medium, Large



WIAWIS EZ FINGER TAB

EZ finger tab is designed with an adjustable plate to perfectly fit your palm and allow for comfortable and natural hooking. The plate can be precisely adjusted to fit your hand by moving the plate in three planes : up and down, front and back, and diagonally. The small size of the tab takes away obstructions.

The tab is made from reliable, high-quality genuine Cordovan leather.

TYPE RH / LH SIZE X-Small, Small, Medium, Large



WIAWIS EZ R FINGER TAB

The round design of the EZ R Tab and unique sliding adjustments allow for comfortable thumb positioning and natural hooking. The unique plate positioning allows for dynamic control over the WIAWIS EZ R finger tab. It is possible to control factors such as hand shape, the force transmitted through the hand, and sensation of the shot. The plate that supports the little finger can be micro-adjusted and is also detachable. The tab is made from reliable, high-quality genuine Cordovan leather.

TYPE RH / LH SIZE X-Small, Small, Medium, Large



ACCESSORIES

AT-100 ARM GUARD

The new AT-100 Arm Guard has a skeleton-like structure with all the unnecessary parts cut out, making it extremely light and comfortable to wear. Its smooth outer surface creates less friction when impacted by the string.

COLORS

Black, Red, Blue, White, Orange, Green



FINNO CHEST GUARD



Ergonomically designed to sit securely and consistently on the shoulder and around the chest shot after shot, FINNO Chest Guard was designed by archers for archers!

SIZE

Small, Medium, Large

TYPE

RH / LH

COLORS

Black, Red, Blue, White, Orange, Green



ACCESSORIES



ABS BOWCASE

Protecting archery equipment is essential, and that is the why the ABS Bowcase has such a solid outer shell. The smart design includes an extendable trolley handle, but does not sacrifice space for its impressive durability. Inside, there is plenty of room to store and organize a variety of archery gear.

SIZE INNER : 830 X 330 X 205 (mm), OUTER : 878 X 348 X 219 (mm)
COLORS Black, Silver



TY MULTI BOW STAND

Suitable for indoor and outdoor use, the TY Multi Bow Stand is solidly built and a reliable bow support in all conditions. It is light yet strong and durable, its flip-lock legs fold up for easy storage and comes with two types of cradle head.

COLOR Silver

Stable in any conditions with more firmly designed rest. →



STRETCH BAND

Used as an exercise tool, the SCAPOWER Stretch Band will increase an archer's pulling weight, build up muscle and develop firmness in the shoulder. It can also be used to improve posture and technique.

Daily practice is recommended : 10 minutes at a time with at least a 2 or 3 minute break. It does not take long to see improvement in shot placement, draw process and balance in the bow shoulder. Try it for yourself!



ARROW PULLER

The solid gripping surface on WIN&WIN's arrow puller makes retrieving arrows from the target safe and easy. It fits comfortably in the hand, includes a keyring for attachment to a belt or pack. Shaped like a cat!



GRIP MAKER

Some archers find a custom-fit grip improves their shooting. Make your own grip quickly and easily with a WIN&WIN grip maker resin kit. WIN&WIN Gripper resin is available in 300g and 25g quantities.



2015 BOW SPECIFICATIONS



WIN&WIN RISER TECHNICAL SPECIFICATIONS

RISER	LENGTH	MASS WEIGHT	TYPE	MATERIAL
WIAWIS NANO MAX	25 inch	1320g	RH / LH	Carbon Graphite / Nano Carbon
	27 inch	1370g	RH	Carbon Graphite / Nano Carbon
INNO CXT	23 inch	1200g	RH	Carbon Graphite / Carbon
	25 inch	1250g	RH / LH	Carbon Graphite / Carbon
	26 inch	1285g	RH	Carbon Graphite / Carbon
	27 inch	1300g	RH	Carbon Graphite / Carbon
INNO AXT	25 inch	1330g	RH / LH	Forged Aluminum / Cut by Machine
INNO AL1	25 inch	1320g	RH / LH	Forged Aluminum / Cut by Machine
RCX-100	25 inch	1100g	RH / LH	Royal Cross Carbon & Carbon U/D
WINEX	25 inch	1280g	RH / LH	Forged Aluminum / Cut by Machine
WINACT-VT	25 inch	1280g	RH / LH	Forged Aluminum / Cut by Machine
RAPIDO	25 inch	1100g	RH / LH	Royal Cross Carbon & Carbon U/D, Glass Fiber

WIN&WIN LIMBS TECHNICAL SPECIFICATIONS

LIMBS	LENGTH	POUNDAGE	TYPE	MATERIAL
WIAWIS ONE (FOAM)	66", 68" & 70"	28 ~ 48 lbs	Glossy	Nano Foam Core / High Modulus Carbon / Flaxpreg
WIAWIS ONE (WOOD)	66", 68" & 70"	28 ~ 48 lbs	Glossy	Nano Wood Core / High Modulus Carbon / Flaxpreg
INNO EX POWER	66", 68" & 70"	28 ~ 48 lbs	Glossy / Matt	Nano Foam Core / High Modulus Carbon
INNO EX PRIME	66", 68" & 70"	28 ~ 48 lbs	Glossy / Matt	Nano Wood Core / High Modulus Carbon
RCX-100	66", 68" & 70"	28 ~ 48 lbs		Nano Foam Core / High Modulus Carbon
WINEX	66", 68" & 70"	28 ~ 48 lbs		Royal Cross Carbon
WINACT-VT	66", 68" & 70"	26 ~ 46 lbs		Royal Cross Carbon
RAPIDO	66", 68" & 70"	26 ~ 46 lbs		Royal Cross Carbon

PROFESSIONALISM, POWER AND PASSION : BORN TO WIN.



OFFICIAL ARCHER SHIRTS



OFFICIAL ARCHER SHIRTS



COLOR
Blue

SIZE
S
M
L
XL
XXL

POLO SHIRTS



COLOR
Blue

SIZE
XS
S
M
L
XL
XXL
XXXL

GREAT WIN T-SHIRTS



COLOR
White

SIZE
XS
S
M
L
XL

BLUE FIRE T-SHIRTS



COLORS
White
Black

SIZE
S
M
L
XL

CAP 1

COLORS Beige, Navy



CAP 2

COLOR Blue



CAP 3

COLOR White



CAP 4

COLORS Blue, Black



CAP 5

COLORS White, Black



BELT

COLOR
Black



TOWEL WIN&WIN

COLOR
Blue



SOCKS

COLOR
White



WIN&WIN IS PROUD OF YOU ALL!

THEY SET NEW WORLD RECORDS with WIN&WIN BOWS

WOMEN	2001	LEE, Hyun Jung	360pts (30M)
		LEE, Hyun Jung	348pts (70M)
	2000	JUNG, Chang Sook	1384pts (340/ 344/ 344/ 356)
		Luts Wiese	328pts (Cardet 50M)
		CHOI, Nam Ok	1382pts (345/ 343/ 340/ 354)
MEN		CHUNG, Soo young	336pts (Junior 36 arrows)
	1999	JUNG, Chang sook	380pts (343/ 342/ 341/ 354)
	2010	IM, Dong Hyun	691pts (70M)
	2006	CHUNG, Jae Hun	348pts (70M)
	2002	GHE, Dong Hyun	60pts
	2001	OH, Kyo Moon	1379pts (332/ 343/ 344/ 360)

2014

First Asian Grand Prix 2014
World Archery Indoor Championships 2014
Archery World Cup 2014 Stage 3
Archery World Cup 2014 Stage 1

PEROVA Ksenia(RUS) / women
TYACK Ryan(AUS) / men
CHANG, Hye Jin(KR) / women
KIKUCHI Hideki(JP) / men

2013

World outdoor championships
The 16th of indoor archery world cup
Indoor Archery World Cup final
European Grand Prix 1st stage
World Cup stage 3
World Cup Stage 4
Asian Archery Championships
First Asian Grand Prix

LEE Seungyun(KR) / men
Celine Schobinger(FR) / women
JEON Sung Eun(KR) / women
GAEL Prevost(FR) / men
XiaoXiang Dai(CN) / men
LEE Seungyun(KR) / men
Takaharu FURUKAWA(JP) / men
Takaharu FURUKAWA(JP) / men

2012

OLYMPIC GAMES 2012(Team Women)
OLYMPIC GAMES 2012(Individual Women)
Archery World Cup Final(Individual Women)
Archery World Cup Stage 3(Team Women)
Archery World Cup Stage 3(Team Women)
Archery World Cup Stage 2(Team Men)
Archery World Cup Stage 2(Team Men)
Archery World Cup Stage 1(Team Women)
Archery World Cup Stage 1(Individual Women)
1st Asian Grand Prix(Individual Men)
1st Asian Grand Prix(Individual Women)
1st Asian Grand Prix(Team Men)
1st Asian Grand Prix(Team Men)
Vegas Shoot(Individual Women)

KI, Bo Bae / women
KI, Bo Bae / women
KI, Bo Bae / women
KI, Bo Bae / women
STEPANOVA Inna / women
GODFREY Laurence / men
WILLS Alan / men
KI, Bo Bae / women
KI, Bo Bae / women
GIROUILLE Romain / men
HAYAKAWA Ren / women
PREVOST Gael / men
GIROUILLE Romain / men
PEROVA Ksenia / women

2011

14th European nnuual Indoor Event in Nimes, France
World Cup Indoor Challenge in Las Vegas, USA
Asian Grand Prix in Bangkok, Thailand
Asian Grand Prix in Bangkok, Thailand
European Indoor Championships in Cambrils, Spain
GB National stage 1, Great Britain
World Archery Championships in Torino, Italy
World Cup stage 4 in Shanghai, China

LEE, Hyo Jin / women
Louise Klinge LAURSEN / women
Romain GIROUILLE / men
Inna STEPANOVA / women
Tatyana BORODAY / women
Larry Godfrey / men
VAN LAMOEN Denisse Astrid / women
Inna STEPANOVA / women

2010

2nd Asian Grand Prix 2010
Youth Olympic Games
World Cup 2nd Series
World Cup 3rd Series
World Cup 4th Series
8th World University Archery Championships 2010
World Archery Field Championships
European Indoor Championships
The South Amercian Games 2010
World Archery European Target Outdoor Championships F2F Tournament

BANERJEE Rahul / men
KWAK, Ye Ji / women
JING Xiangqing / men
KIM Moonjung / women
IM Dong-Hyun / men
JO Eun Ae / women
WILLS Alan / men
GOBBELS Zoe / junior women
SANCHEZ Natalia / women
GIROUILLE Romain / men
SEGINA Tatiana / women

2009

Archery World Cup Stage 1
Archery World Cup Stage 2
Archery World Cup Stage 3
Outdoor Archery World Championships
Archery World Cup Finals
Asian Archery Championships

GIROUILLE Romain / men
TALUKDAR Jayanta / men
KWAK, Ye Ji / women
LEE, Chang Hwan / men
KWAK, Ye Ji / women
KUO Cheng Wei / men

2008

Beijing Olympics
World Cup Finals
World Cup 4th Series
World Cup 2nd Series
8th European Outdoor Archery Championships
7th World University Archery Championships
Paralympic Games

RUBAN Viktor / men
MOSPINEK Justyna / women
RUBAN Viktor / men
GIROUILLE Romain / men
Tsyrempilov Baljinima / men
WANG, Cheng Pang / men
LEE, Hwa Sook / women-standing

2007

10th European Annual Indoor Event in Nimes, France

World Cup 1st Series & Korean Cup
World Cup 2nd Series

World Cup 3rd Series
World Cup 4th Series

15th Asian Championships
IPC World Championships
World Cup Finals

UNRUH, Lisa / women
Santana Plaza Ignacio / junior men
WANG, Cheng Pang / men
LEE, Hye Yeon / women
FRANGILLI Michele / men
KIM, Yeon Chul / men
BANERJEE Dola / women
Tsyrempilov Baljinima / men
WANG, Cheng Pang / men
LEE, Hong Gu / men W2
BANERJEE Dola / women
Tsyrempilov Baljinima / men

2006

9th European Annual Indoor Event in Nimes, France

20th Field Archery World Championships
9th Junior Archery World Outdoor Championships
6th World University Archery Championships

LEBECQUE Pascale / junior women
TONELLI Amedeo / men
FRANGILLI Michele / men
GIROUILLE Romain / men
TAGUMA Kiroko / women
LEE, Jong young / men

2005

43rd Outdoor Target Archery World Championships
5th World University Archery Championships in Izmir
IPC World Archery Championships

European Junior Championships, Denmark
4th European Junior Field Championships, Slovenia
3rd European Grand Prix Tournament

CHUNG, Jae hun / men
KUO, Chen wei / men
LEE, Hwa sook / standing class women
LEE, Hong gu / W2 class men
TONETTA Elena / women
FRANGILLI Carla / women
TONETTA Elena / women

2004

8th World Junior Archery Championships, England
5th World University Archery Championships, Madrid

JO, Eun ji / women
LEE, Hyung jung / women
KYE, Dong hyun / men

2003

42nd World Championships

4th World University Archery Championships

YUN, Mi jin / women
FRANGILLI Michele / men
KIM, Mun jung / women
HENCKELS Jeff / men

2002

Field Archery World Championships

FRANGILLI Michele / men

2000

Sydney Olympics
Junior World Championships

YUN, Mi-jin / women
CHOI, Nam ok / women
CHUNG, Soo young / men

1999

World Championships

LEE, Eun kyung / women
HONG, Sung chil / men

1998

Junior World Championships

KIM, Nam soon / women
OH, Jin hyuk / men



CHRISTIAN WEISS
GERMANY



VANESSA LEE
CANADA



JAYANTA TALUKDAR
INDIA



HAMILTON NGUYEN
CANADA



LAURIE LECOINTRE
FRANCE



DAI XIAOXIANG
CHINA

WIN&WIN ARCHERY ATHLETES



MARCO GALIAZZO
ITALY



JEFF HENCKELS
LUXEMBURG



RYAN TYACK
AUSTRALIA



KU BONCHAN
KOREA



ALAN WILLS
GREAT BRITAIN



ROMAIN GIROUILLE
FRANCE



JESHER APPELS
NETHERLANDS



DOLA BANERJEE
INDIA



FANG YU TING
CHINA



KUO CHENG-WEI
CHINESE TAIPEI



NOÉMIE BRIANNE
FRANCE



ANA UMER
SLOVENIA



AURORE CREMMYDAS
FRANCE



CONNER SORLEY
CANADA



YUKI HAYASHI
JAPAN



ASHE MORGAN
GREAT BRITAIN



JUUSO HUHTALA
FINLAND



MATT ZUMBO
USA



GEORCY-STÉPHANIE THIFFAULT
PICARD / CANADA



MAURO NESPOLI
ITALY



TAYLOR WORTH
AUSTRALIA



AMY OLIVER
GREAT BRITAIN



KAORI KAWANAKA
JAPAN



RAHUL BANERJEE
INDIA



TAKAHARU FURUKAWA
JAPAN



EMILIE LACROIX
FRANCE



CHANG HYE JIN
KOREA



CÉLINE SCHOBINGER
SWITZERLAND



IRIA GRANDAL GARCIA
SPAIN



THOMAS ANTOINE
FRANCE



XU JING
CHINA



DAN OLARU
MOLDOVIA



LAURA RUGGIERI
FRANCE



JUAN RODRIGUEZ
SPAIN



BECKY MARTIN
GREAT BRITAIN



LUCAS DANIEL
FRANCE



NAOMI FOLKARD
GREAT BRITAIN



MIRENE ETXEBERRIA FERRER
SPAIN



LARRY GODFREY
GREAT BRITAIN



NATHAN YAMAGUCHI
USA



MATHIEU JIMENEZ
FRANCE



KIM YU MI
KOREA